



Balance CBD, A  
Division of AAXLL

## Brands

#510 - 58 West Portal San Francisco, CA  
94127-1304

Sample 292-100721-134

300mg Isolate Salmon Tincture

Batch/Lot # AAXLL #211005ST

Sample Submitted: 10-07-2021; Report Date: 10-13-2021

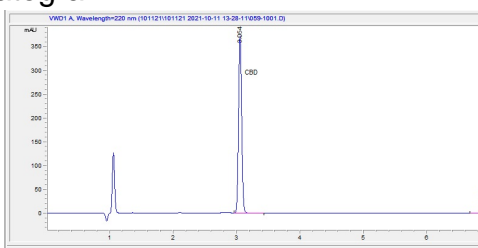
Sample Density: 940 mg/ml; Sample Unit Size: 28.40 g

## 300mg Isolate Salmon Tincture

Tincture

Batch/Lot # AAXLL #211005ST

### Chromatogram



### Cannabinoid Profile



CBD  
1.09

### Cannabinoid Profile by HPLC

**0.00%**

Calculated THC Yield

**1.09%**

Calculated CBD Yield

**1.09%**

Total Cannabinoids

Cannabinoid	% wt	mg/ml	mg/unit
CBD	1.09	10.25	309.56
<b>Total Cannabinoids</b>	<b>1.09</b>	<b>10.2</b>	<b>309.6</b>
<b>Calculated THC Yield</b>	<b>0.00</b>	<b>0.00</b>	<b>0.00</b>
<b>Calculated CBD Yield</b>	<b>1.09</b>	<b>10.25</b>	<b>309.56</b>

Calculated Maximum THC Yield = THC + 0.877 \* THCA

Calculated Maximum CBD Yield = CBD + 0.877 \* CBDA

#### Marin Analytics, LLC

250 Bel Marin Keys Blvd, Suite D4  
Novato, CA 94949

415-936-6477 / sarabiancalana1@gmail.com

**Sara Biancalana**  
Chief Scientist

This sample has been tested by Marin Analytics, LLC using valid testing methodologies and a quality system. Values reported relate only to the sample tested. Marin Analytics, LLC makes no claims as to the efficacy, safety or other risks associated with any detected or non-detected levels of any compounds reported herein. This Certificate shall not be reproduced except in full, without the written approval of Marin Analytics, LLC.